



Adi Shankara

INSTITUTE OF ENGINEERING AND TECHNOLOGY

Approved by AICTE & Affiliated to APJ Abdul Kalam Technological University
Vidya Bharathi Nagar , Mattoor, Kalady, Ernakulam District, Kerala State Pin: 683574



CRITERION 4 - INFRASTRUCTURE AND LEARNING RESOURCES

4.1 Physical Facilities



Industry Supported Facility



Industry Supported Facilities

Industry Supported Labs

Industry-supported laboratories are centers that bridge the gap between industry and academia. With modern equipment and advanced laboratory facilities, students can improve their practical and industrial skills in one place. The right equipment paired with the latest technology to enrich student needs, opening up many possibilities. Each student's interests connect to different options; these labs are the gateway to your dream job. The institute has the distinction of to establish several labs to collaborate with industry for training, competency assessment and student internships.

Department of Computer Science & Engineering

Sl. No	Name of Laboratory
1	Hi Tech Lab
2	Cyber Forensics Research Lab

1. Hi Tech Lab

SL.No	Name of the Industry Supported lab	Item	Specification
1	HiTech Lab	TV AUDIO SYSTEM SPEAKER	CISCO CTS-SX60-IPST60-K9 5YR VCPA-CISCO CTS-MIC CLING-G2 CISCO CAB-ETHRSHI.D-10M 10MM MIC LED M LG B6TRSE 66" UHD 16:9 Spkr SONODYNE PM 101WM VCPA SONODYNE PM 101WB WMK Kramer C-MHM/MHM-3 1M HDMI Pch AUDPA Kramer WP-H1M WALL PLATE



Adi Shankara

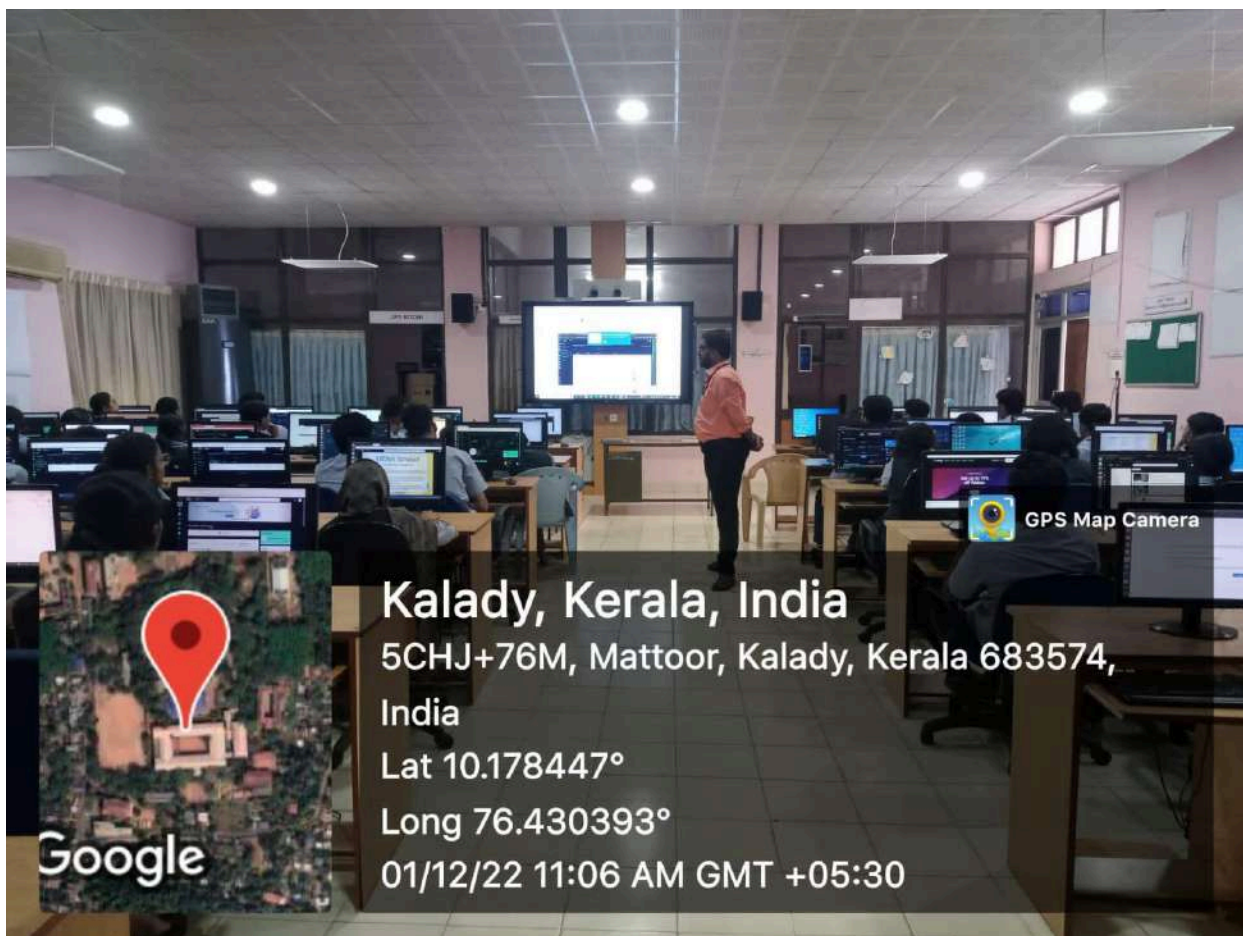
INSTITUTE OF ENGINEERING AND TECHNOLOGY

Approved by AICTE & Affiliated to APJ Abdul Kalam
Technological University
(Owned by Adi Sankara Trust)

Vidya Bharathi Nagar,
Kalady, Ernakulam dist.
Kerala- 683574

Criteria-4

			KRAMER C-MHM/MHM-35 10.7M KRAMER C-MHM/MHM-25 7.6M HDMI NWRCK VALRACK 550W*450D 4U KRAMER BC-1T AUDIO(STERIO) D-LINK NCB-06SGRYR CAT6 Blk Cbl
2	Cyber Forensic	36 computers	Processor - Core i5 11th Gen, RAM-16 GB DDR4, Storage-512 GB SSD NVME M.2, Network-Ethernet 1 Gbps, Integrated Audio port, USB 3 Monitor-21.5" HDMI Monitor, Keyboard, Mouse.





2. Cyber Forensics Research Lab

Cyber forensics is a process of extracting data as proof for a crime (that involves electronic devices) while following proper investigation rules to nab the culprit by presenting the evidence to the court. Cyber forensics is also known as computer forensics in today's technology driven generation, the importance of cyber forensics is immense. Technology combined with forensic forensics paves the way for quicker investigations and accurate results. Cyber forensics is a field that follows certain procedures to find the evidence to reach conclusions after proper investigation of matters. As long as there is cybercrime, there will be a demand for cyber forensic analysts.

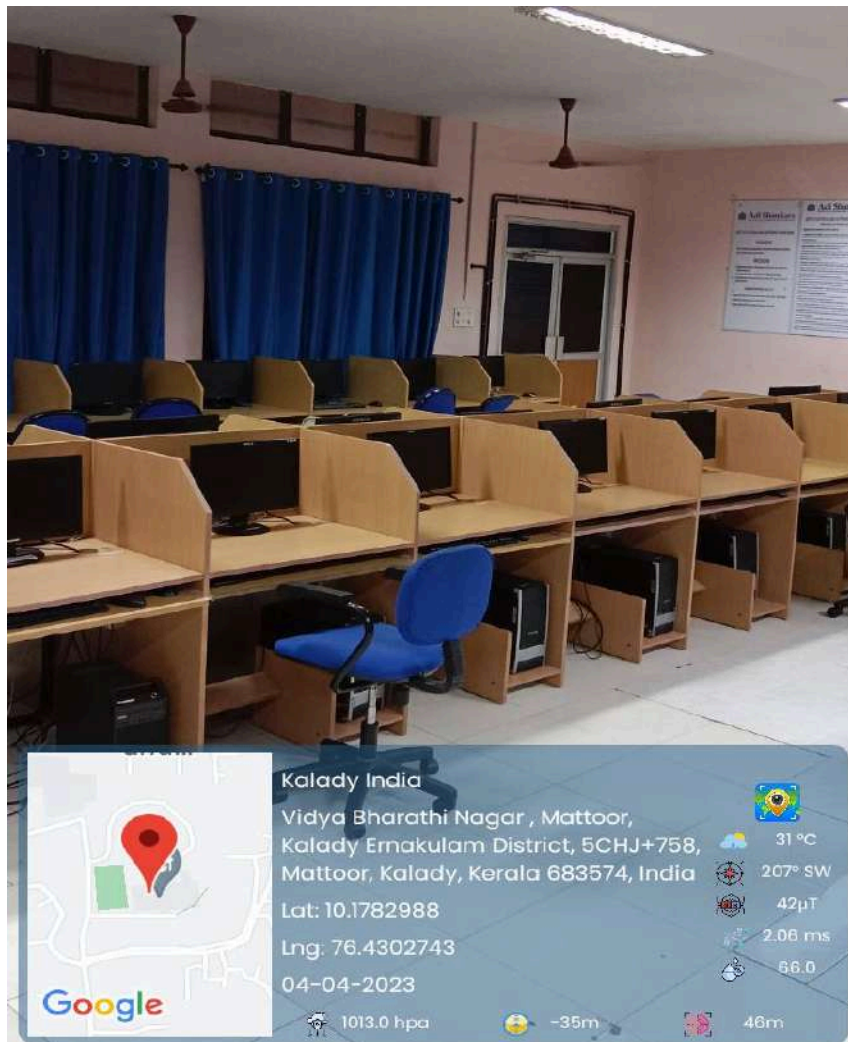




Department of Electrical & Electronics Engineering

1. Programming and Simulation Lab

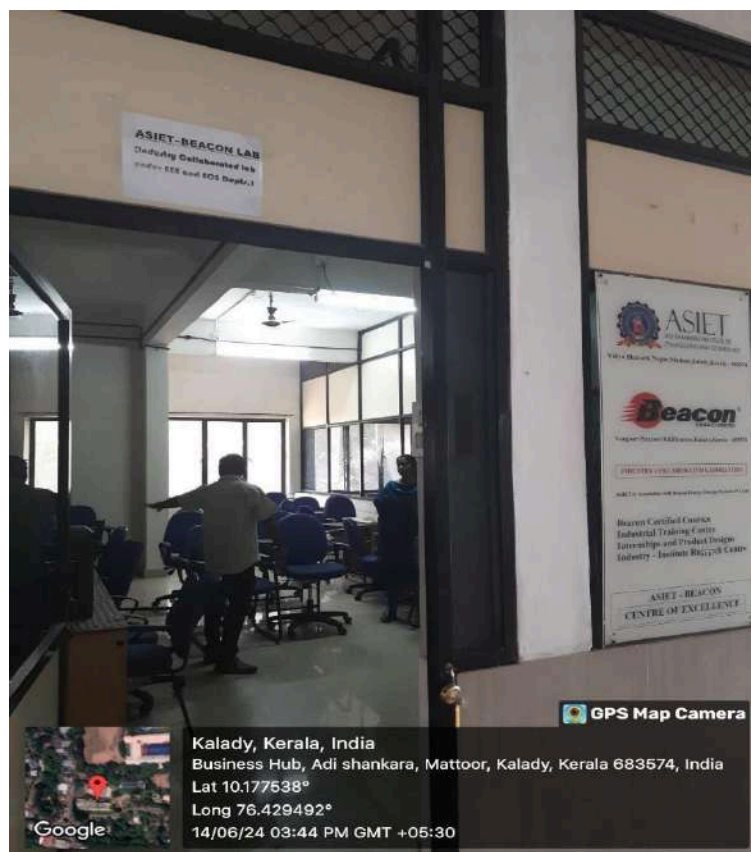
Programming and Simulation Lab is an Industry Supported Lab with KKM Soft which will provide training on four important software's (AutoCAD, AutoCAD Electrical, Revit MeP and IOT) for placement assistance. This lab includes Computers with softwares AUTOCAD, MATLAB, pSpice, KEIL & PROTEUS, Power Backup Facility, Internet Facility, Printer Facility, Server.





2. BEACON Industry Supported Lab

Adi Shankara Institute of Engineering and Technology has signed an MOU with Beacon Energy Storage Systems Pvt Ltd. Both parties jointly agree to work towards this goal, in line with the spirit of this Memorandum of Understanding (MOU). MOU focused to follow advancement of knowledge and employability of the students in the core embedded system domain. Also to provide exposure and industrial experience for the faculty on state of the art technology and best practices in the domain. Beacon Energy Storage Systems Pvt Ltd. Jointly design a curriculum which is in line with current industry expectations. Also provide internship for the students in B-VOC Renewable energy, B-Tech Electrical and Electronics and Electronics and Communication courses. Beacon have also Set up a R&D facility at the Shankara campus to facilitate training to students and help Beacon to reverse engineer and improve upon the current line of products that will be introduced to the market.





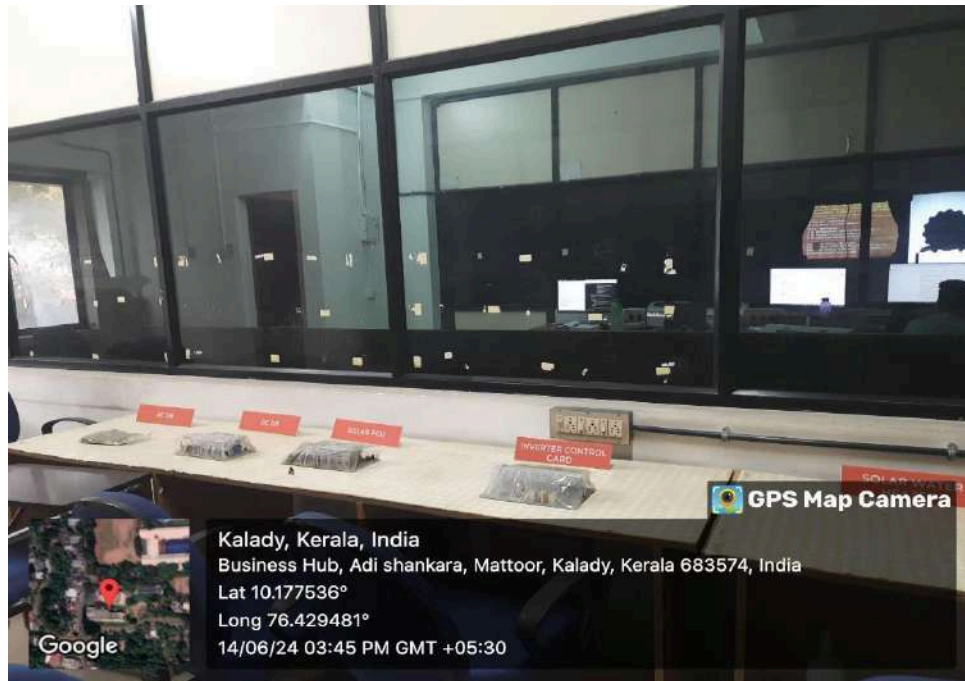
Adi Shankara

INSTITUTE OF ENGINEERING AND TECHNOLOGY

Approved by AICTE & Affiliated to APJ Abdul Kalam
Technological University
(Owned by Adi Sankara Trust)

Vidya Bharathi Nagar,
Kalady, Ernakulam dist.
Kerala- 683574

Criteria-4





Department of Biomedical Engineering

Horiba India Technical Institute Centre of Excellence for IVD Instrumentation

This Center of Excellence at ASIET Kalady offers hands-on training in clinical laboratory equipment such as Haematology Analyzers, Biochemistry Analyzers, and Blood Clot Analyzers. It aims to enhance the skills of Biomedical, Electronics, and Electrical engineering students in instrumentation with medical applications, providing a pathway for careers in this field. Additionally, students from backgrounds in Biochemistry, Pharma, Medical Laboratory Technician courses, and other Paramedical disciplines can gain engineering insights into the machines used in their professions. The facility also welcomes interns from polytechnics.





Department of Mechanical Engineering

BMW Skill Next

BMW “Skill Next” in India offers a unique opportunity to gain hands-on knowledge and training in the most advanced BMW engine and transmission technologies for Mechanical engineering students. The leading automobile manufacturer is aware of the gap between the needs of universities and industry and has developed a course for this program in which prospective engineers and young people have a special opportunity to complete practical training in addition to theoretical knowledge. The module was developed by professional trainers from BMW Group India Training Center and BMW Group Plant Chennai. The workshop is a combination of classroom and hands-on sessions that will help you gain technical insight into important practical information.

Specification:-Twin-Power Turbo, In-line 4-cylinder diesel engine, and the eight-speed, Steptronic, automatic transmission



Adi Shankara

INSTITUTE OF ENGINEERING AND TECHNOLOGY

Approved by AICTE & Affiliated to APJ Abdul Kalam
Technological University
(Owned by Adi Sankara Trust)

Vidya Bharathi Nagar,
Kalady, Ernakulam dist.
Kerala- 683574

Criteria-4

